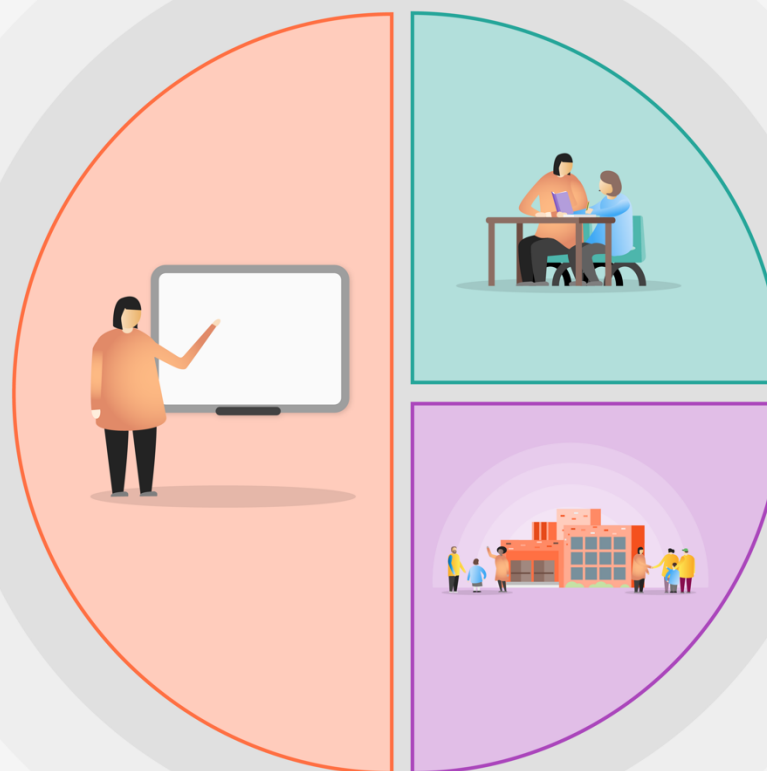


## 1 Teaching

- Quality First Teaching supported by evidence informed CPD for teachers and support staff.
- A coaching, peer-support model to help embed and sustain research-based teaching strategies.
- A broad and engaging curriculum that focuses on vocabulary acquisition
- Continued focus on core skills (readtheory.com, Phonics Play, writing linked to the learning project, TT Rockstars and MyMaths)
- Whole-class reading approach underpinned by clearly defined formative assessment practices – whole school focus on oracy in Early Years
- Curriculum ‘essentials’ for Reading, Phonics, Writing and Maths are identified and taught / revisited across wider curriculum subjects – focused support for teachers from senior leaders
- Further development of a Maths Mastery approach supported by external Mastery Specialists.
- Effective formative assessment as a central point of T&L – Insight Tracking
- Regular Subject Planning and Development Meetings



## 2 Targeted academic support

- Same-day in-class intervention – Assessment for Learning strategies for in class direct feedback
- Teacher-led targeted group teaching for Year 5 and Year 6 pupils.
- Specific intervention programmes led by both Teachers and Teaching Assistants
- Third Space Learning – targeted 1:1 programme of support for mathematical learning in KS2
- Focused tutoring for English through small group TA-led intervention

## 3 Wider strategies

- Lessons on identifying emotions and self-regulation strategies – development of self-awareness through myHappyMind programme of study
- Continued development of Trauma Informed Model for self-awareness, self-regulation, problem solving, social awareness and relationship skills shared